

LUXURY  
REDEFINED

# ALTURA DIAMOND

ACCESS

Quieter than a silent room, the Altura Diamond home lift brings you the very best in comfort, and has elegant styling to match your home.

Driven by a unique gearless motor and cogbelt system, the Altura Diamond glides between floors, giving you the smoothest and quietest ride imaginable. The sound level inside the lift is lower than the average background noise in a silent room – that’s how quiet it is.

The luxurious performance is matched by the Altura Diamond’s elegant looks. Choose from an exclusive selection of cabin fittings to define a style for your Altura Diamond that coordinates with your interior.

02

**EXPERIENCE TRUE  
LUXURY WITH THE  
ALTURA DIAMOND  
HOME LIFT**

BB

The architect who designed our house recommended an Altura Diamond lift. It’s a delight to use because it runs so quietly and smoothly – and it looks great in our hallway too.”



03

With an enclosed cabin, one-touch controls and fully automatic sliding doors, the Altura Diamond gives you the features of a full-size elevator, but its compact design means that it can be fitted easily into most buildings.

1

### SMOOTH FROM START TO FINISH

The exceptionally smooth ride in an Altura Diamond lift begins and ends gently with the soft start and stop device fitted on all lifts. Simply press and release your destination button and relax until the doors open again at the end of your ride.

2

### DESIGN YOUR LIFT

With an exclusive range of styling options, your Altura Diamond lift can truly become part of your home. Choose one of our Diamond Collection cabins, or create your own design from our range of high-quality finishes for walls, floors, accents, control panel and ceiling.

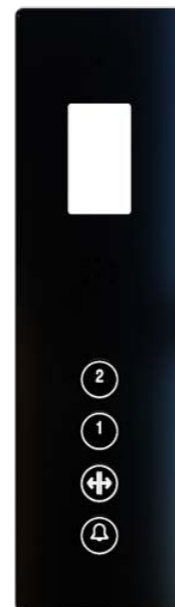
3

### EASY TO INSTALL

The Altura Diamond can be installed indoors or outdoors, either in its own structural metallic shaft, or in a masonry shaft. The lift mechanism is fully contained within the shaft and the lift runs on standard mains electricity.

Altura lifts are fully compliant with all relevant European safety standards and are suitable for use in private or public buildings.

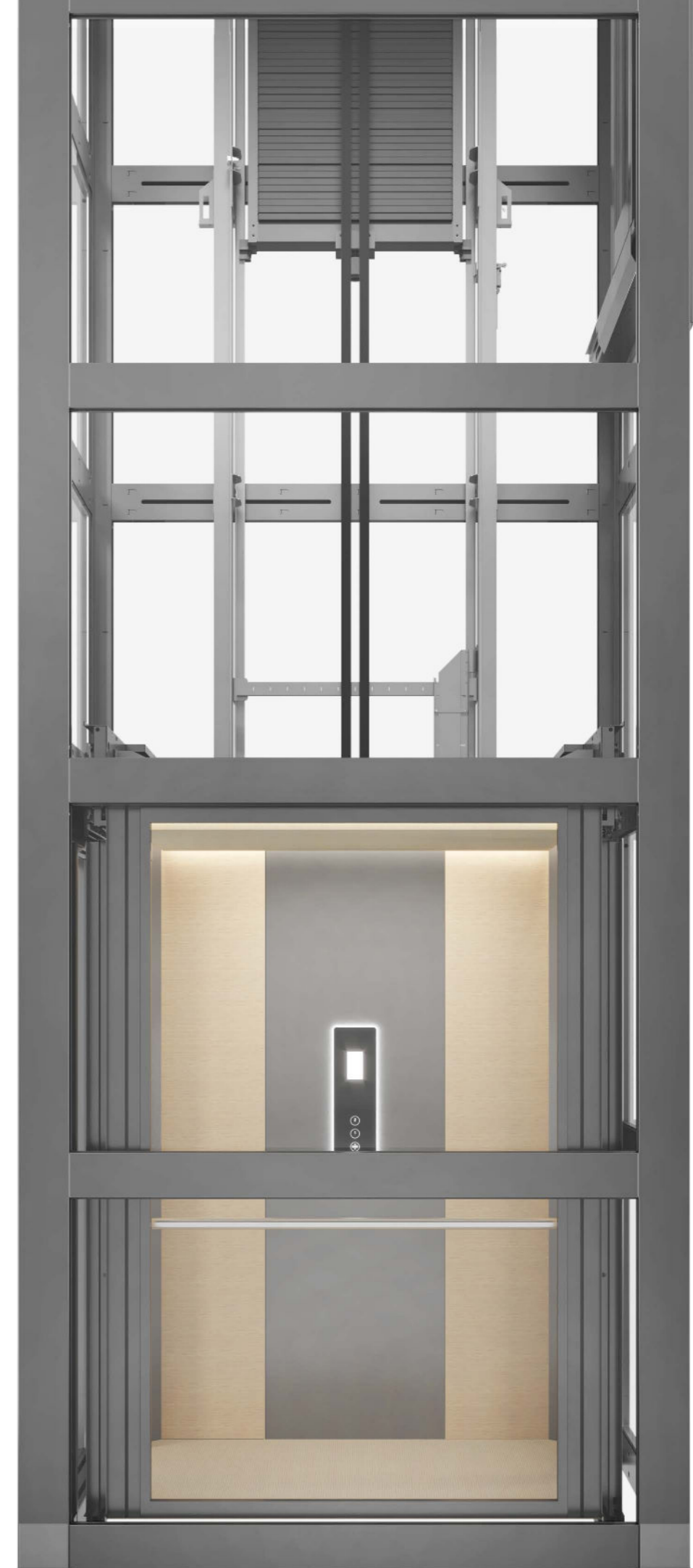
1



3

2

05



04

ALTURA DIAMOND  
HAS ELEVATOR  
FEATURES CONTAINED  
IN THE SIZE OF  
A HOME LIFT





08

# FEATURES

## COMFORT FOR ALL

1

### Control Panel

The sleek backlit control panel in the cabin is available in a choice of finishes and has a crystal-clear digital display panel. Floor indicator displays for the landings are also available as an option.

The display panels also give information about the status of the lift, and they show diagnostic codes for easy service and maintenance.

2

### Designed to Fit

The Altura Diamond is a compact, self-contained lift system, designed to be installed in many different types of building. A flexible range of cabin sizes and door configurations means that your lift will be designed to give the best fit in your available space.

3

### Clean Technology

The cogbelt system that drives the Altura Diamond is exceptionally clean because it does not require hydraulic fluid or oil. The shaft has no rivets and the panels are available silicon-free.

The lift is designed so that servicing and maintenance can be carried out quickly and efficiently.

4

### Keeping You and Your Family Safe

The lift is protected by a back-up battery power supply. A battery guard continuously monitors the charge level to ensure that there is always enough power in the batteries to run the lift in case of a power-cut.

A handrail, an alarm button and two-way communication are all included as standard. When installed in public buildings, the lift can be secured with a selection of locking options.

09



**THE BACKLIT ALTURA  
CONTROL PANEL  
LOOKS STUNNING AND  
IS EASY TO USE**

# SIMPLICITY CABIN LUXURY MADE EASY

10



The Simplicity Cabin has a clean and streamlined look that blends discreetly into your surroundings.

## SIMPLICITY: STYLE OPTIONS

Walls	Coloured film finish (skinplate), stainless steel or painted in choice of colour.
Floor	Floor safety vinyl in choice of three colours
Mirror	Half-wall
Panoramic Wall	Half -wall or full-wall, in transparent glass
Lighting	Three LED spotlights
Styling	-
Accents	-
Control Panel	Black
Handrail	Black or stainless steel

11

# DELUXE CABIN

## A WORLD OF CHOICE

12



Express your style with the elegant finishes and contrasting colour accents in the Deluxe Cabin range. Create your own look, or choose a design from our Diamond Collection.

## DELUXE: STYLE OPTIONS

Walls	Choice of high pressure laminates in different texture effects
Floor	Stone, carpet or vinyl flooring in choice of colours.
Mirror	Slim vertical, half-wall or full-wall
Panoramic Wall	Half-wall or full-wall, in transparent glass
Lighting	Choice of LED lighting configurations
Styling	Choose a cabin style from the Diamond Collection or design your own.
Accents	Contrasting corner and central panel accents.
Control Panel	Black, mirrored steel or gold
Handrail	Stainless steel or gold

13

DIAMOND COLLECTION : MODERN



14 Modern Europe



Modern Americas

DIAMOND COLLECTION: CLASSIC



Classic Europe



Classic Americas

15



Modern Asia

**1. Modern Europe**  
 Wall, bright wood 4515; accent, black 7021; ceiling, round; flooring, grey vinyl; mirror, none; handrail, stainless steel, 2 pieces.

**2. Modern Americas**  
 Wall, concrete 3331; accent, blue 5024; ceiling, plain; flooring, grey vinyl; mirror, slim vertical; handrail, stainless steel, 2 pieces.

**3. Modern Asia**  
 Wall, silk TX2606; accent, red 3003; ceiling, opal; flooring, grey vinyl; mirror, none; handrail, stainless steel, 2 pieces.

(2 piece handrails for 1400 wide cabin only)



Classic Asia

**4. Classic Europe**  
 Wall, warm wood 4511; accent, beige 1019; ceiling, plain; flooring, sand carpet; mirror, full wall; handrail, stainless steel, 2 pieces.

**5. Classic Americas**  
 Wall, linen tx3318; accent, light grey 7035; ceiling, plain; flooring, grey vinyl; full height panoramic wall; handrail, stainless steel on panoramic wall.

**6. Classic Asia**  
 Wall, dark wood 4303; accent, red 3003; ceiling, plain; flooring, grey vinyl; mirror, half wall; handrail, stainless steel 2 pieces.

(2 piece handrails for 1400 wide cabin only)



**DIAMOND COLLECTION: NATURAL**



**16** Natural Europe



Natural Americas



Natural Asia

**7. Natural Europe**  
 Wall, warm wood 4533; accent, green 6011; ceiling, plain; flooring, grey carpet; mirror, none; handrail, stainless steel, 2 pieces.

**8. Natural Americas**  
 Wall, woodgrain TX4485; accent, dark grey 7012; ceiling, plain; flooring, sand carpet; mirror, none; handrail, stainless steel, 2 pieces.

**9. Natural Asia;**  
 Wall, bright wood 4367; accent, green 6011; ceiling, plain; flooring, grey carpet; mirror, none; handrail, stainless steel, 2 pieces.

(2 piece handrails for 1400 wide cabin only)

**DIAMOND COLLECTION: INTERNATIONAL**

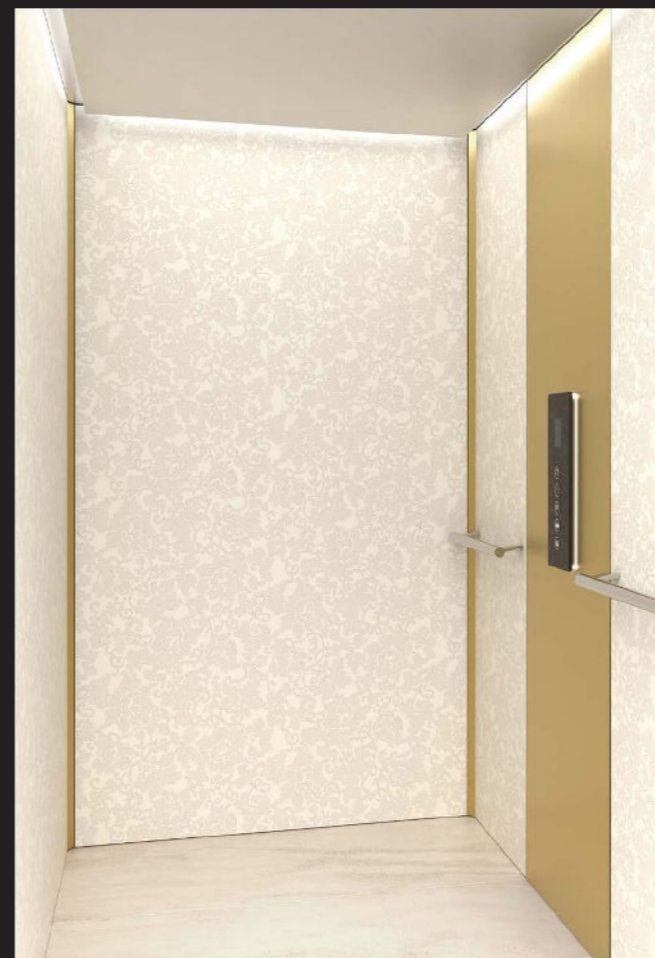


International Modern



International Natural

**17**



International Classic

**10. International Modern**  
 wall, limestone 868; accent, steel mirror; ceiling, plain; flooring, granite effect - white; mirror, none; handrail, stainless steel, 2 pieces

**11. International Natural**  
 Wall, limestone 868; accent, steel mirror; ceiling, plain; flooring, granite effect - white; mirror, none; handrail, stainless steel, 2 pieces

**12. International Classic**  
 Wall, concrete 546; accent, steel gold; ceiling, plain; flooring, granite effect - sand; mirror, none; handrail, stainless steel, 2 pieces

(2 piece handrails for 1400 mm wide cabin only)

# CABIN OPTIONS

## GLASS & MIRRORED WALLS



The Altura Diamond cabin can be fitted with full-height panoramic glass walls, a half-height panoramic wall, or a mirror.

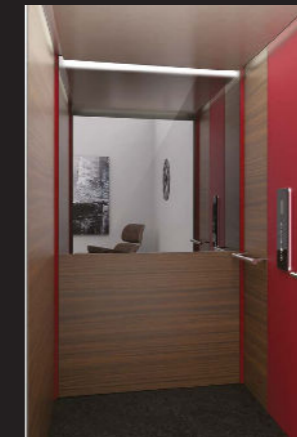
These options are available on both Simplicity and Deluxe cabins and can be fitted on any side of the cabin except for the control panel side or the door sides.



Full/Half  
Glass Wall



Mirror:  
Slim Vertical



Mirror:  
Half Wall



Mirror:  
Full Wall

## DOORS



The Altura Diamond has fully automatic sliding doors on the cabin and landings, giving all the comfort and convenience of a standard elevator.

### Sliding Door Options

Sliding doors are available with the following options:

- + Glass panels with a stainless steel or painted frame
- + Stainless steel
- + Steel, painted in your choice of colour
- + Steel, finished with a coloured or metallic film (skinplate)
- + Side opening (2 panels) or central opening (4 panels)

### Folding Doors

Folding doors in the cabin with swing doors on the landings are also offered as an option. In smaller shaft sizes, folding doors can sometimes provide a wider opening, which may be needed for wheelchair access.

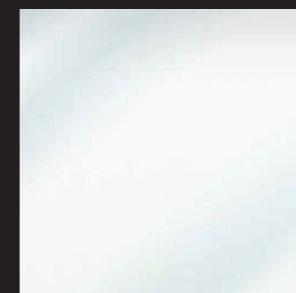
THE ALTURA  
DIAMOND HAS ITS  
OWN STRUCTURAL  
METALLIC SHAFT,  
OR IT CAN  
BE INSTALLED  
UNOBTRUSIVELY IN  
A MASONRY SHAFT

METALLIC SHAFT  
EASY  
INSTALLATION

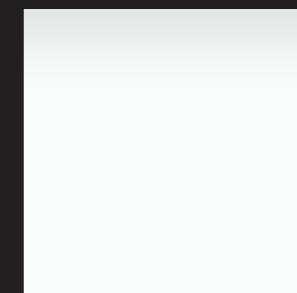
#### Glass Panels

The following options are available for the glass panels in the shaft and in the doors.

Cabin glass walls and half-height windows are always supplied in transparent glass.



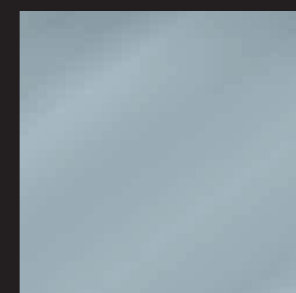
Transparent



Opaque



Semi-Reflective



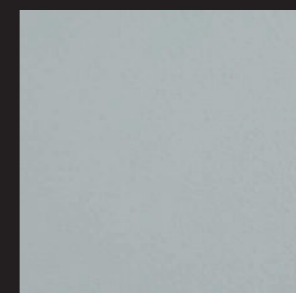
Smoky Grey



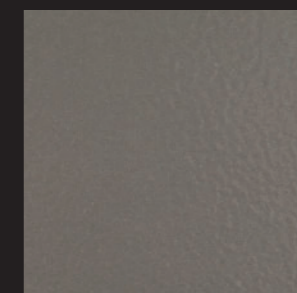
Smoky Satin

#### Metallic Colours

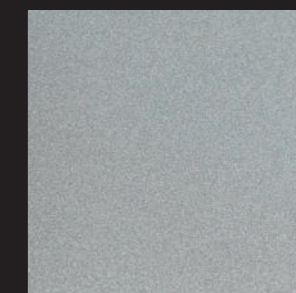
In addition to the standard colour range, the following metallic colours are offered for the shaft structure, shaft panels and landing doors.



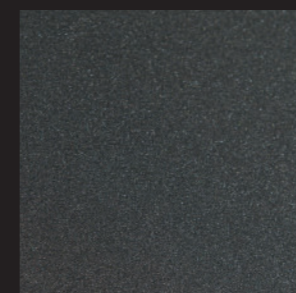
R06



R07



R09



R10

The metallic shaft has a snap-lock fastening system for quick and easy installation. It can be fitted with either plain steel panels, painted in your choice of colour, or with glass panels from the selection below.

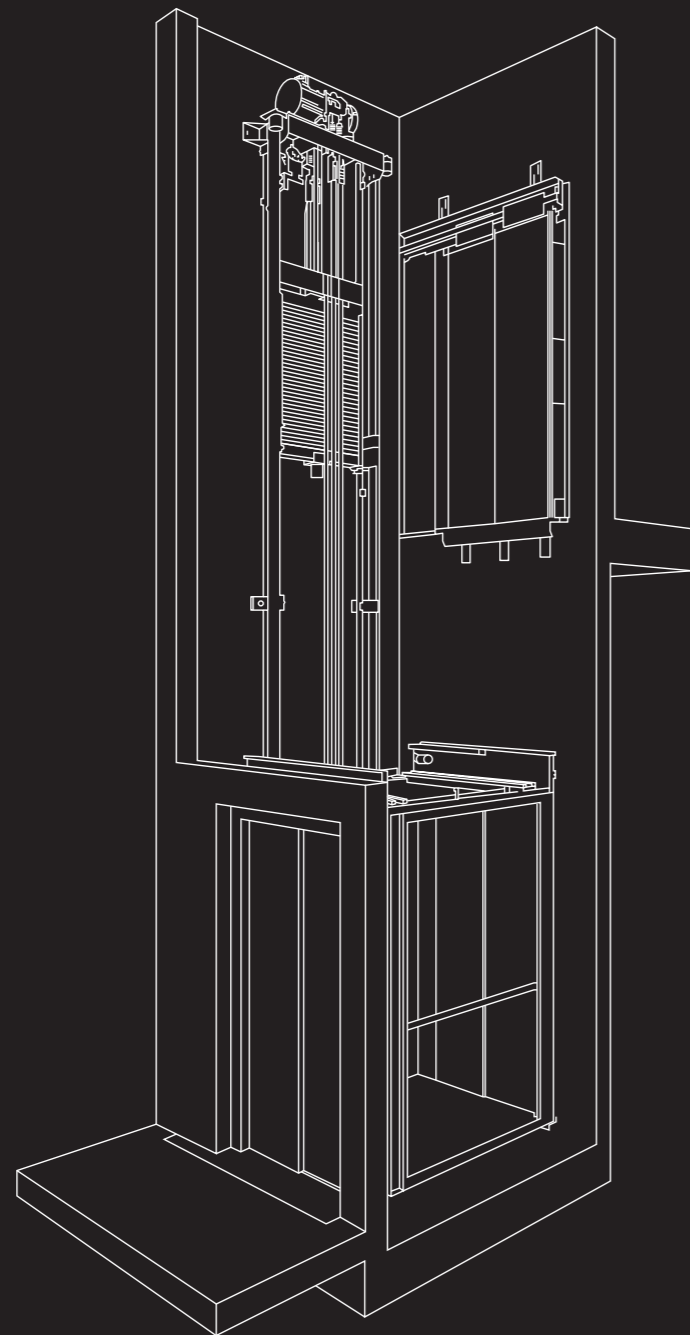
# TECHNICAL SPECIFICATION

## LUXURY IN EVERY DETAIL

Full details of technical specifications, exact dimensions and available plan layouts can be found in the Altura product catalogue.

### SPECIFICATION

<b>Technical Compliance</b>	Machinery Directive 2006/42/EC Reference standard: EN81-41
<b>Drive System</b>	Cogbelt and counterweight system driven by a gearless motor
<b>Rated Speed</b>	Europe: max. 0.15 m/s (2006/42/EC). Outside Europe: Up to 0.4 m/s, where permitted by local regulations.
<b>Travel Height</b>	1100–18000 mm
<b>Number of Stops</b>	Max. 6 stops per lift
<b>Doors</b>	Max. 2 doors per floor / 12 doors per lift
<b>Type of Accesses</b>	Frontal, lateral, opposite or adjacent
<b>Pit</b>	Metallic shaft: 140 mm. If a pit is not possible the lift can be used with a ramp. Masonry shaft: 140 or 250 mm depending on configuration. See catalogue for details.
<b>Shaft type</b>	Metallic structural shaft or masonry shaft.
<b>Shaft Top Height</b>	Structural shaft: 2450–2630 mm Masonry shaft: 2350–2450 mm
<b>Cabin Types</b>	Fully enclosed with sliding doors or with folding doors
<b>Controls</b>	Automatic (one-touch) controls on cabin and landing. Call reservation on landings
<b>Application</b>	Indoor or outdoor
<b>Emergency Lowering</b>	Battery operated emergency lowering with uninterruptible power supply (UPS)
<b>Control Voltage</b>	24 V
<b>Motor</b>	2.8 kW
<b>Power Supply</b>	1-phase 230 V 50/60 Hz 16A
<b>Maximum Power</b>	1.85 kW (when used at 0.15m/s) 3.5 kW (for up to 0.4 m/s)
<b>Circuit Breaker/ RCD</b>	16A tripping curves C/ 30mA class A or B
<b>Rated Load</b>	250–400 kg according to cabin size.



WHEN YOU CHOOSE  
ALTURA DIAMOND,  
YOU'RE CHOOSING  
THE BEST IN  
COMFORT AND LUXURY

24

25



# ABOUT ACCESS

26

Access BDD is a division of TK Access Solutions Ltd. We give people around the world the ability to move comfortably around buildings by providing stairlifts, platform lifts and home lifts, which we distribute via a network of carefully chosen business partners. When you choose an Access BDD lift, you're choosing a high-quality product, supported by expert service and advice.

Our partners are all specialists in mobility or elevator products, and they receive extensive technical and commercial training on our products. Your Access BDD partner will guide you through the product options to help you choose a lift that meets your own needs and suits your surroundings. You'll also receive expert advice to ensure that your new lift conforms to relevant accessibility and safety regulations.

Our products are designed for easy installation and maintenance, with everything taken care of by your Access BDD approved partner.



27

**SINCE 1976 WE'VE  
BEEN SIMPLIFYING  
COMPLEX CHOICES TO  
HELP PEOPLE MOVE  
AROUND THEIR HOMES**

Access BDD is one of Europe's leading suppliers of stairlifts, platform lifts and home lift solutions.

Your local Access BDD dealer is:

